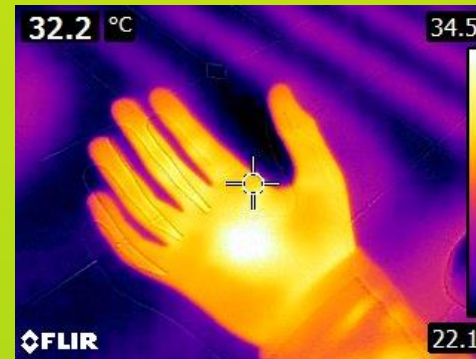


Thermal Imaging

Revealing hidden truths and other uses



Martin Barry



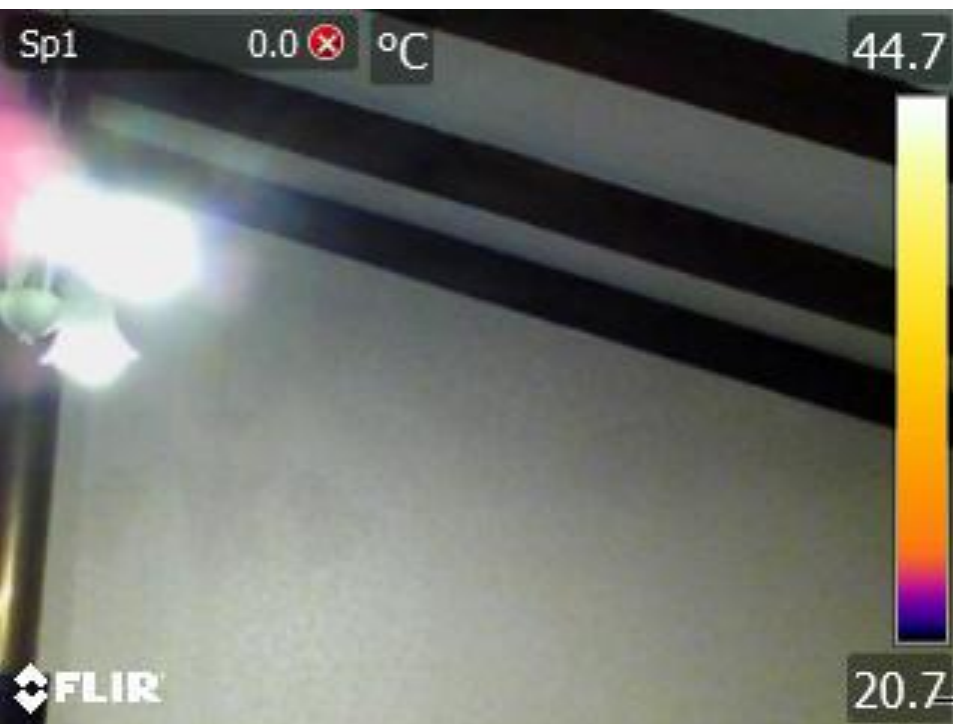
Independent, free personalised advice on how to create a sustainable and healthy home.

The Camera

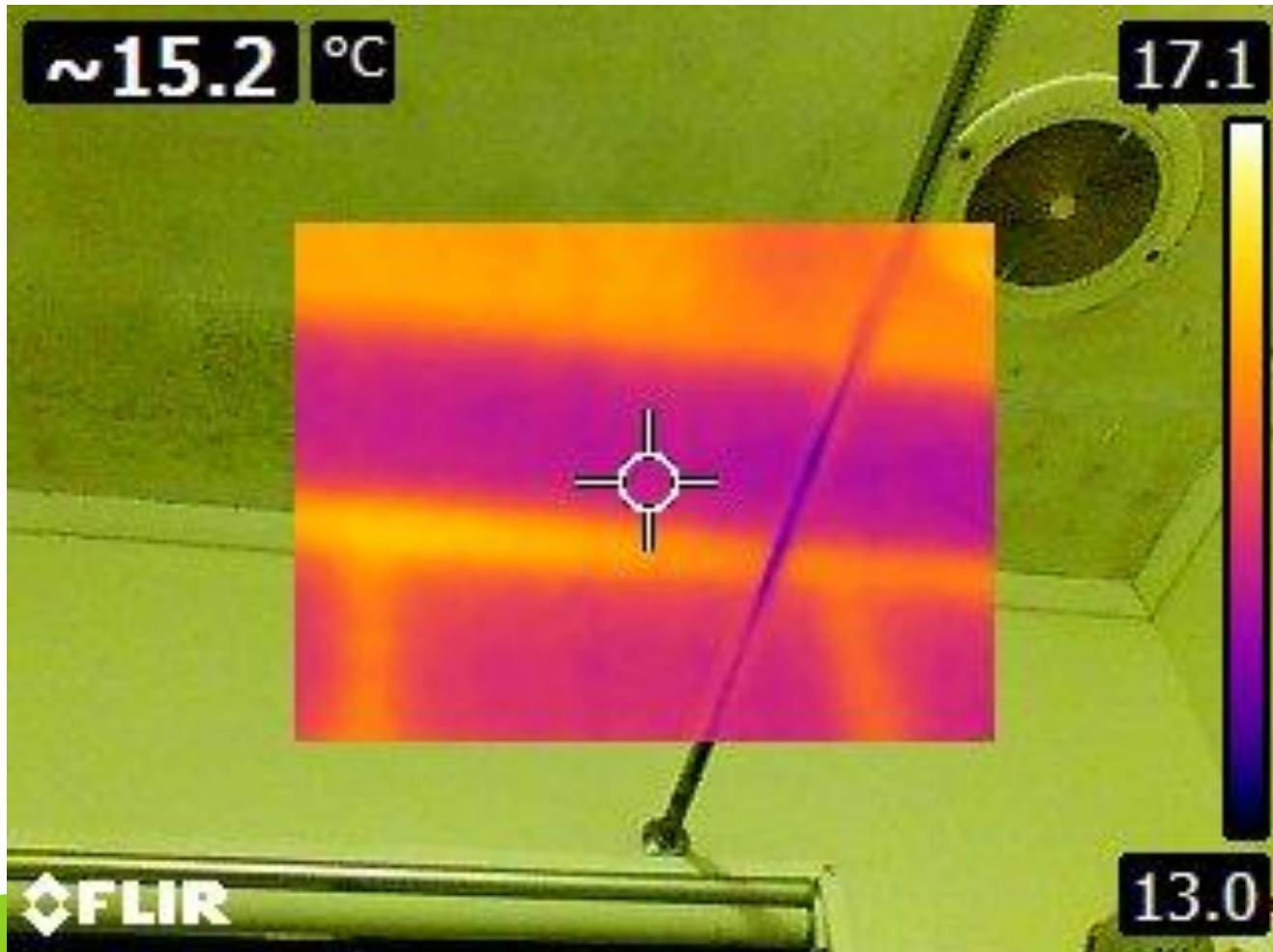
- Thermal cameras detect radiation in the long-infrared range of the electromagnetic spectrum, and produce images of that radiation
- Infrared radiation is emitted by all objects with a temperature above absolute zero
- The amount of radiation emitted by an object increases with temperature



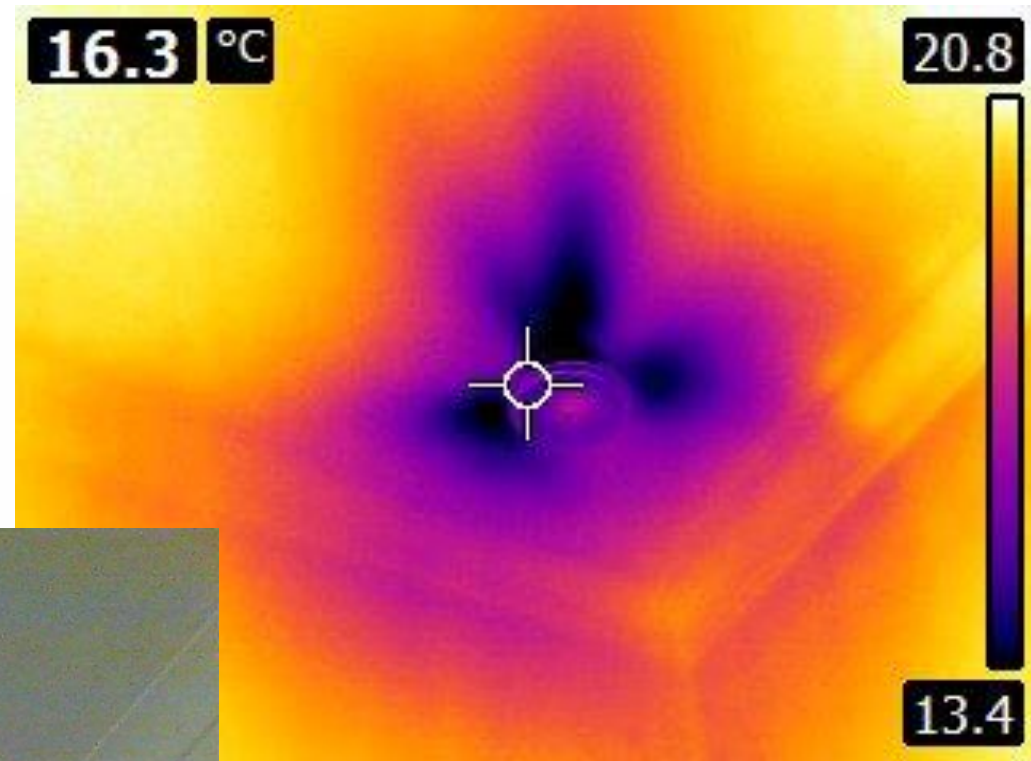
Where exposed rafter meets couple-close roof



Missing insulation = mould



Cool air coming out of a mechanical ventilation duct



Where old meets new



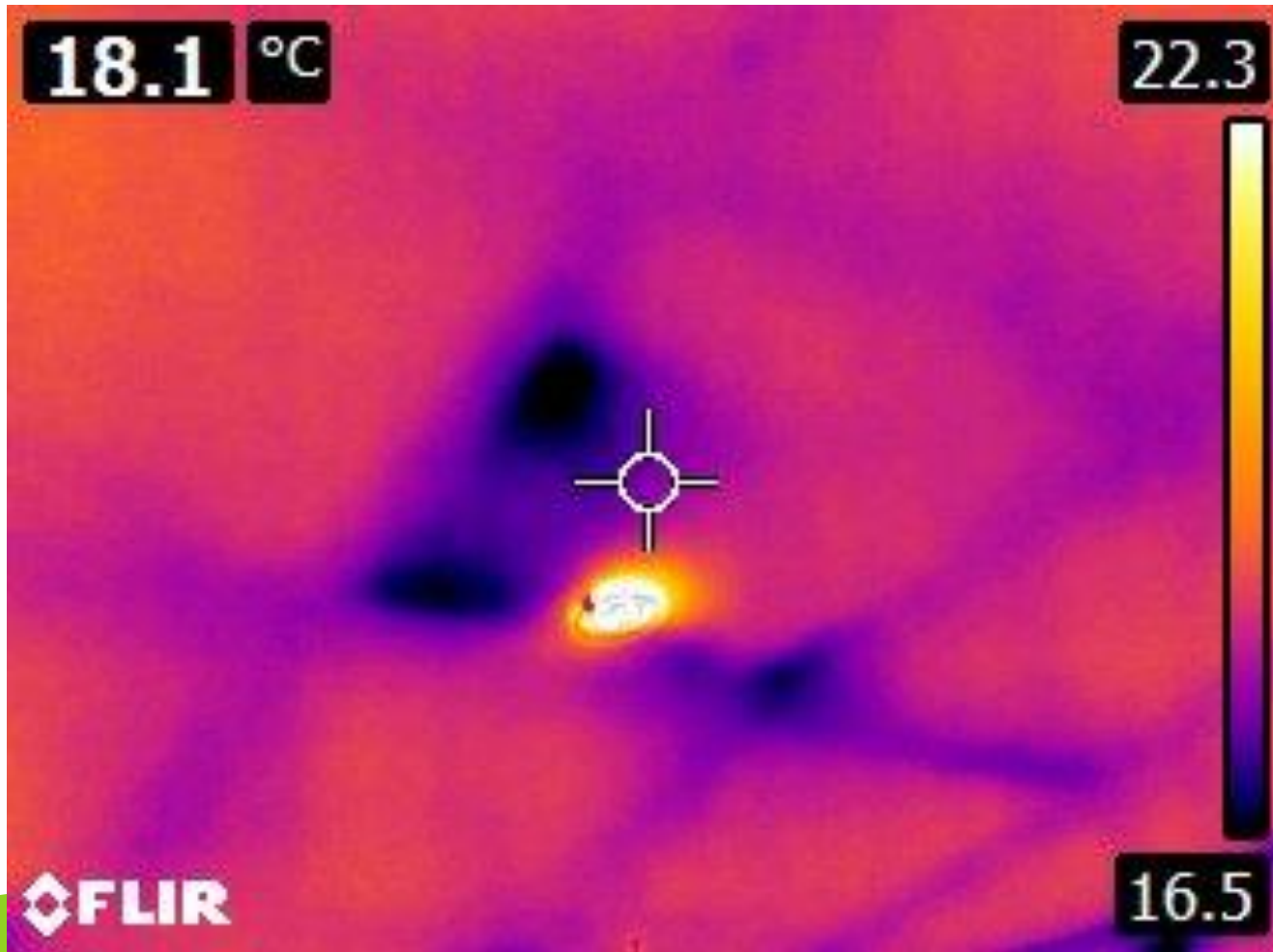
A cool draught



Incomplete blown wall insulation



An insulation gap missing the downlight!



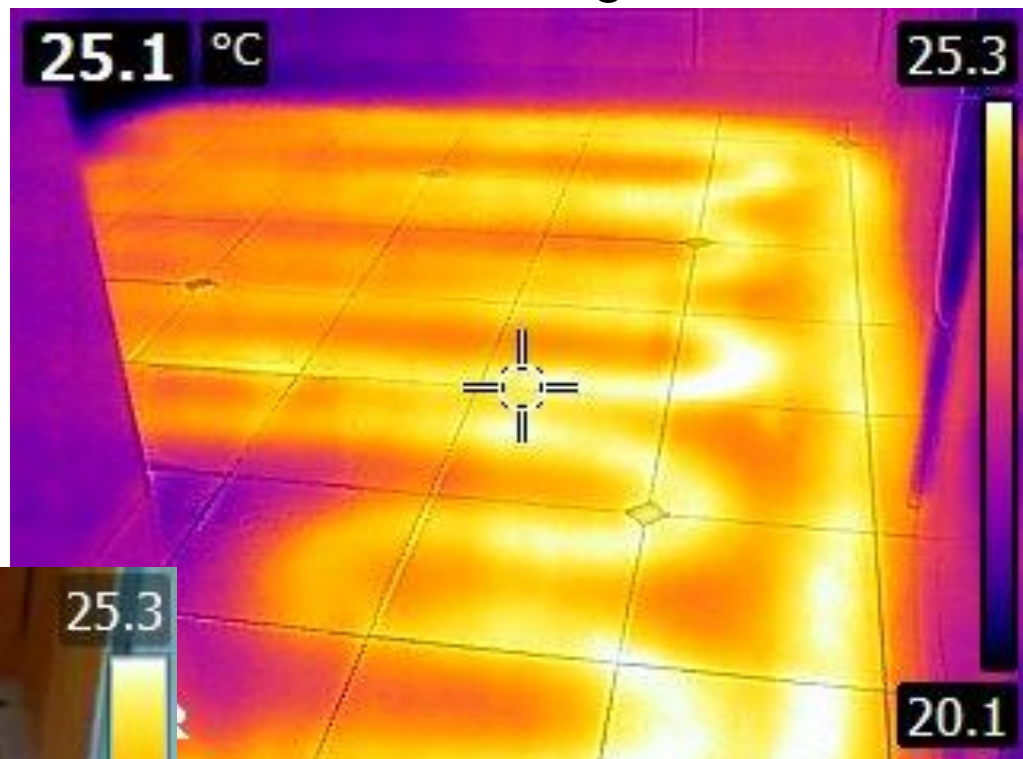
Or taking the safety gap too far



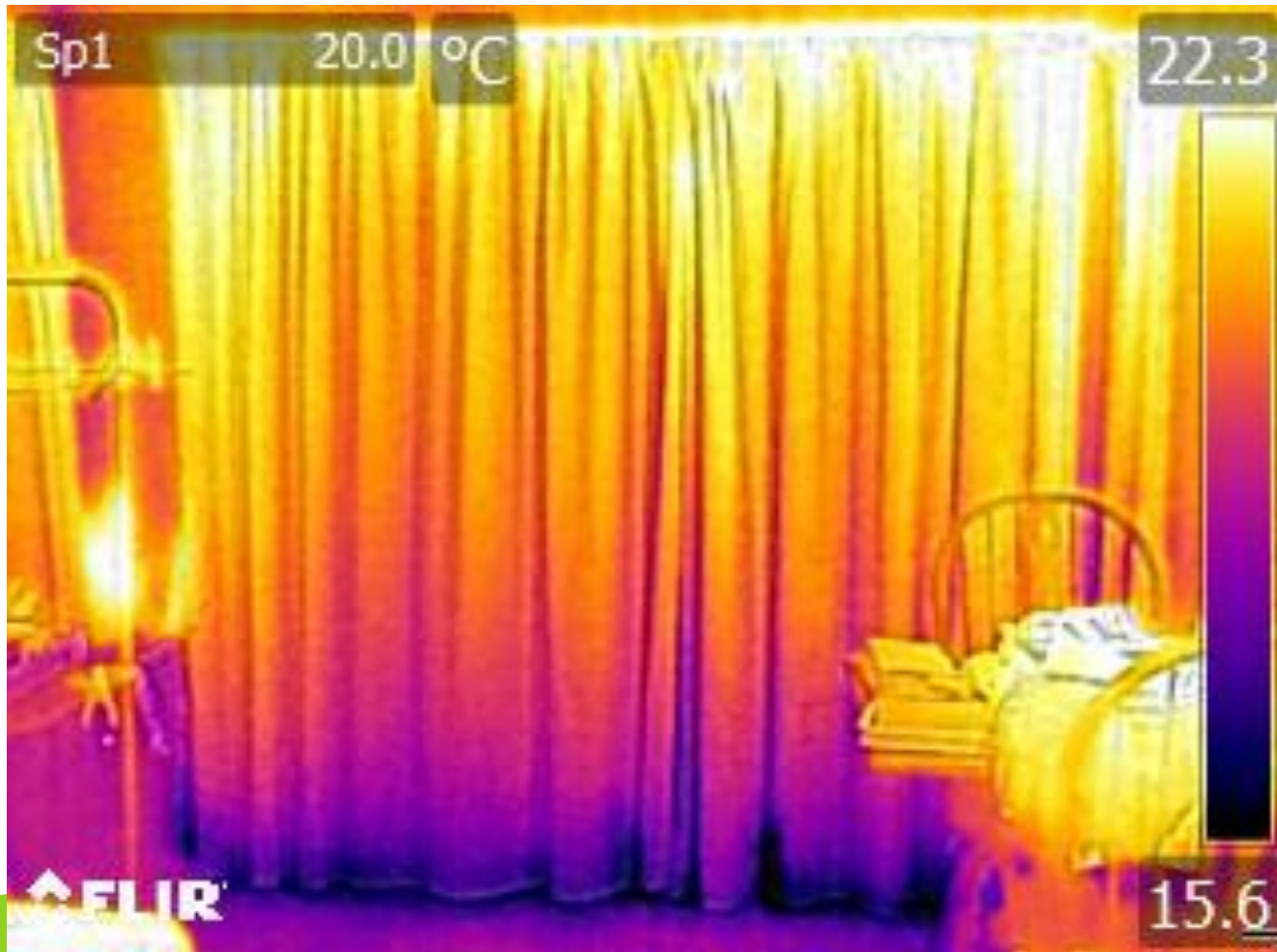
Nesting rodents?



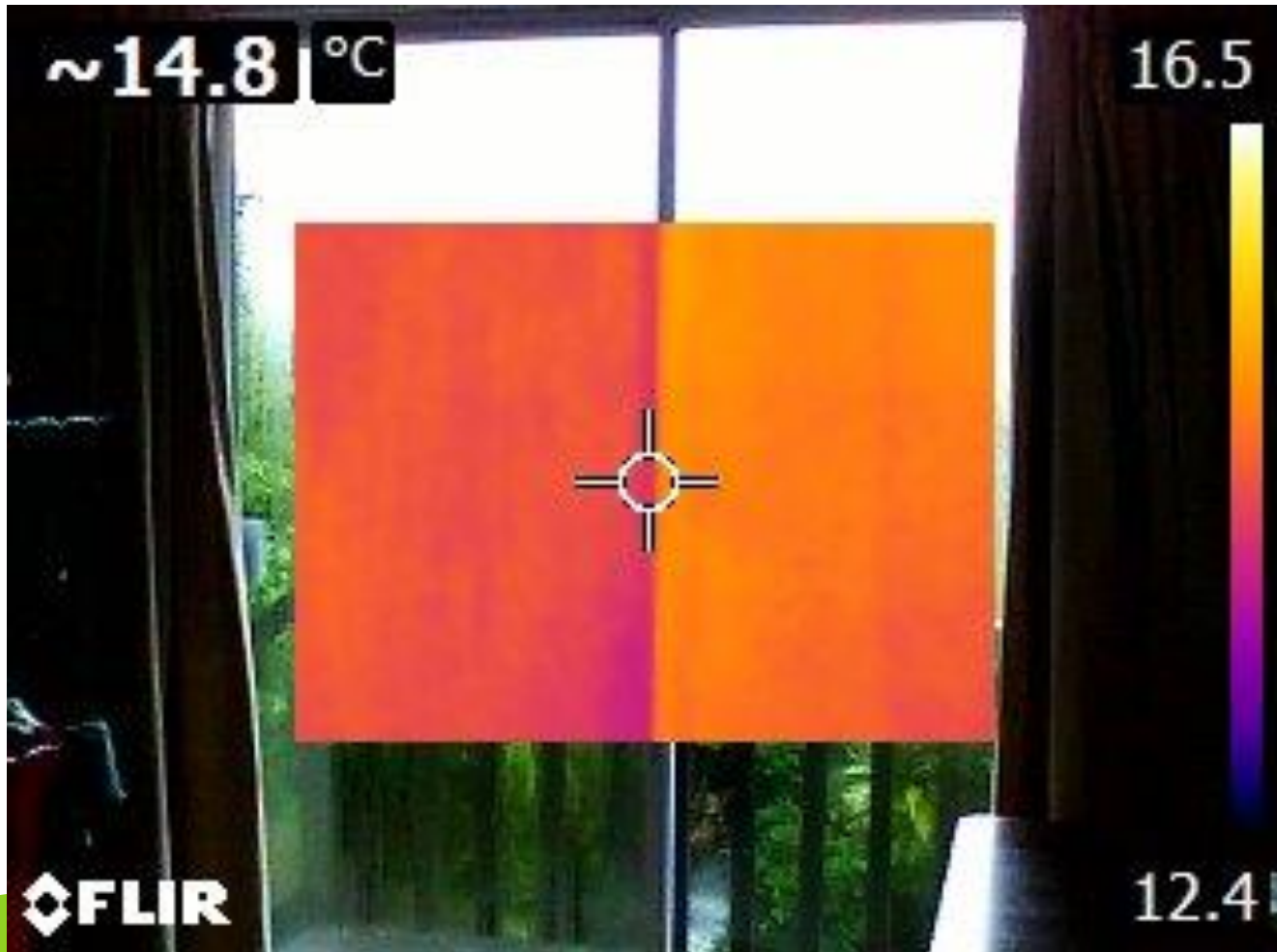
Underfloor heating: Verifying the as-built with the design



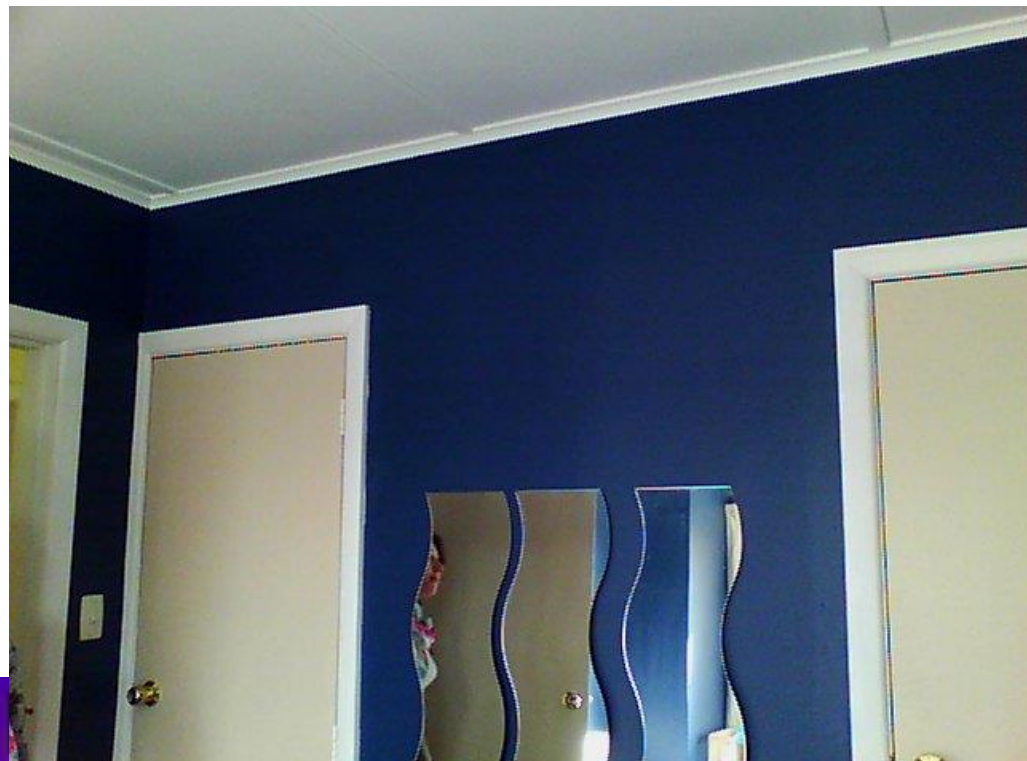
Why curtains should fall to the floor



A tissue for those crying windows



Locating the chimney flue



Electrical fuse boxes



Thanks

Martin Barry



Independent, free personalised advice on how to create a sustainable and healthy home.